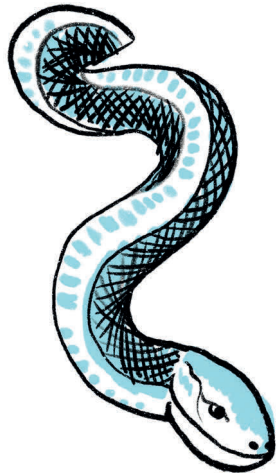
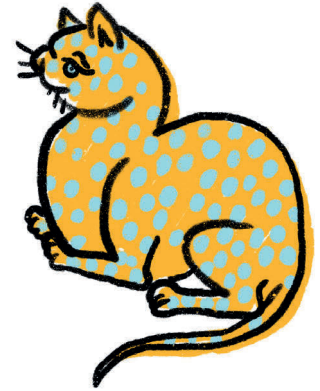




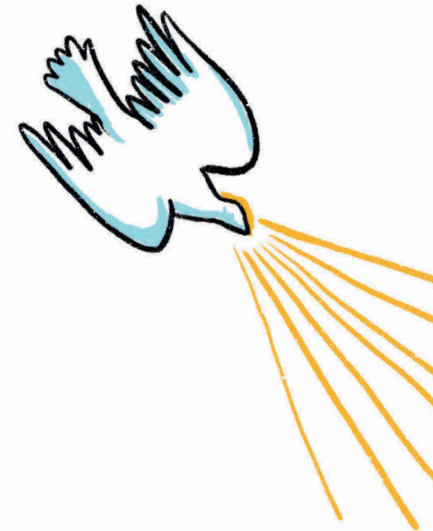
## The Courtauld

The Courtauld has many animals hiding in paintings, objects and furniture, even in the ceilings! Can you help us find them?

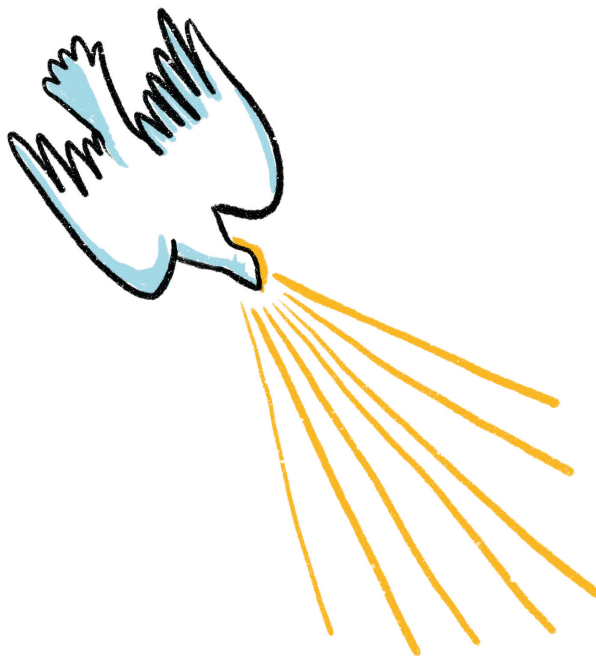


## Animals! Family Trail

The trail starts on **Floor 2** and finishes on Floor 3. Find the animal, turn over the card and discover more!



**Find** and **draw** this dove in a painting in Blavatnik Fine Rooms (**Floor 2, Room 3**).



## Discover and Discuss

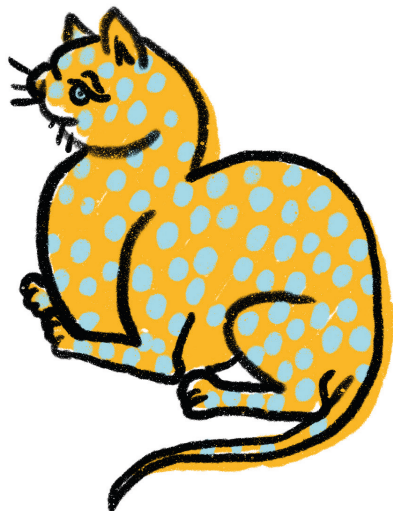
Animals are often used as symbols in art: they stand for something difficult to show. Artists use doves to represent peace, love, hope and God. Read the label for this painting to find out more.

**What sound do I make?**

**What do you think I represent?**



**Find** this spotted cat in a display case in **Room 4**.



## Discover and Discuss

Animals in art can have hidden meanings, they can also be used to sell something. This cat is intended to be fun and eye-catching, like a logo today. Can you think of adverts that use animals to sell something?

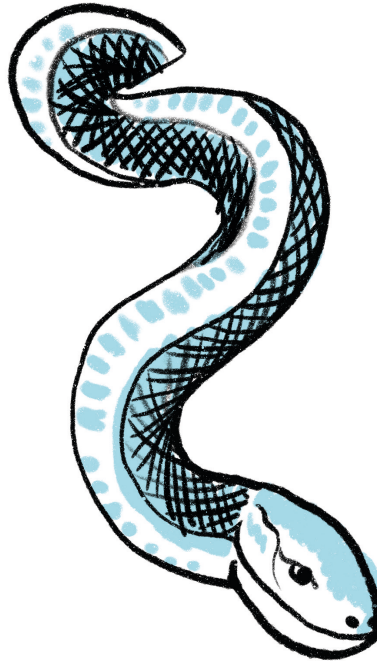
This jar was used to hold medicine. Read the label to discover more.

**What other animals can you see?**



**Draw** (on the other side) a jar, mug or plate and add animals as decoration.

**Find** this snake in a painting in **Room 5**.



30-4-26  
T.H.K.



## Discover and Discuss

The story of Adam and Eve in the Garden of Eden gave artists the opportunity to include different animals in one scene.

How many animals can you identify? Which were drawn from real life?



Cranach, the artist, used the snake as his signature.

**Draw** your signature animal next to the snake.

Over to you, list the animals you can find in **Room 6** before **finding** this monkey in a painting in **Room 7**.





## Discover and Discuss

Wild animals were kept as pets to suggest the owner was wealthy and knowledgeable about the world. They would be shown off to visitors for entertainment.



How do you think animals were treated and how is this the same or different from today?

**Draw or write** your thoughts down next to the monkey.



**Find** this fox in a display case in **Room 8**.



## Discover and Discuss

Foxes appear in myths, folklore and fairy tales across many cultures. They are often shown as clever animals, but also as cunning and sly.

Have you seen foxes in London or near where you live?

What is this fox made of and what was it used for?  
Read the label for help. What do you think about this?

**Draw or describe** a fox that you have seen.

Time to go upstairs to **Floor 3**. Go through the Weston Gallery to the LVHM Great Room and **find** this horse in a small painting.



## Discover and Discuss

Horses are very common animals in art. Have you seen many horses today? For hundreds of years people have relied on them in cities, towns and the countryside. In Paris at the time of this painting, horses were used for getting people and goods around the city.

Why have people brought their horses to the river?

**Find and draw** another animal in a painting in this room.



## Tell us what you think...

1. How many times have you visited a museum/gallery with your family in the last year?

Never     1-2 times     3-5 times     More than 5 times

2. What did you think about our Family Trail? Please tick the box below.



Really enjoyed!



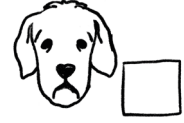
Enjoyed



It was ok



Didn't enjoy



Really didn't enjoy

3. What did you most enjoy about our Animals! Family Trail?

.....  
For example: searching in the gallery, looking closely, talking points, drawing activities, answering questions, creating a story, something you learnt.

4. How can we improve the Family Trail?

.....

Would you like to sign up to our monthly newsletter?

Yes

No

I already receive your newsletter

Parent/Carer email address:

.....

**Thank you very much for your feedback**

Share a photo of your creations with us!

Twitter: @TheCourtauld and Instagram: @Courtauld #MyCourtauld