

The Courtauld

A Closer Look: Édouard Manet, *A Bar at the Folies Bergère*



† Édouard Manet (1832 -1883), *A Bar at the Folies- Bergère*, 1882, Oil on Canvas, 96x 130cm, The Courtauld, London (Samuel Courtauld Trust) © The Courtauld

Speaking Activity: What can you see?

What can you see in the **foreground**?

In the foreground I can see _____

What can you see in the **centre** of the painting?

In the centre I can see _____

What can you see in the **background**?

In the background I can see _____

What can you see on the **right** of the painting?

On the right I can see _____

What can you see on the **left** of the painting?

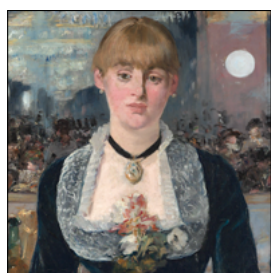
On the left I can see _____

Speaking Activity: A Closer Look

Look at the painting and answer the questions.

- Where are we?
- Is it noisy or quiet?
- Does it look like an exciting place to be?
- Who is the woman in the middle?
- What is she wearing?
- What is her job?
- How does she feel? Is she happy, sad, bored, angry, excited, lonely?
- What is the man on the right doing?
- What are the people wearing?
- What are the people doing?
- What are they looking at?
- Do you like this painting?

Vocabulary:



woman
barmaid



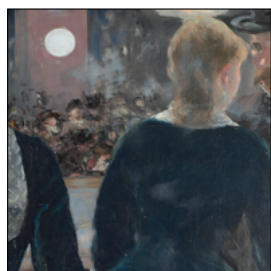
bottles
of champagne,
wine and beer



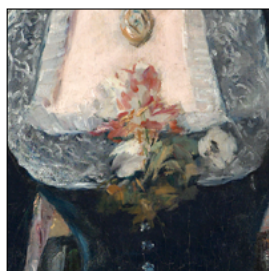
vase



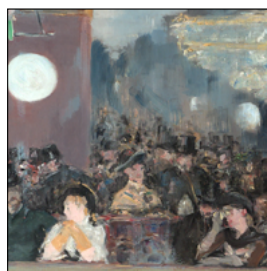
bowl of oranges



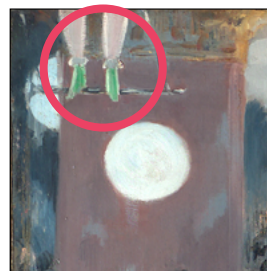
reflection
in the mirror



flowers



crowd of people



acrobat